

Detector Switches

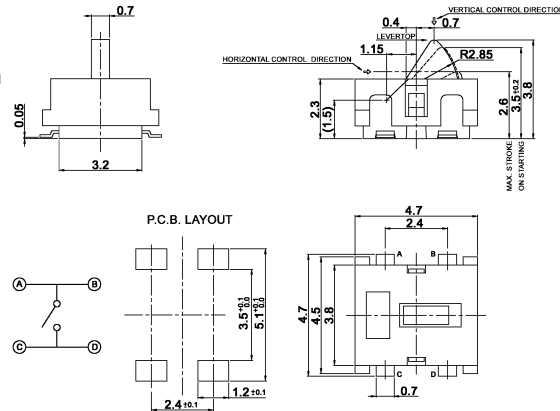
Specifications:

Contact rating:	5V DC, 1 mA
Contact resistance:	< 1 Ω
Insulation resistance:	> 100 MΩ
Dielectric strength:	100 V, 50 Hz for the duration of 1 minute
Operating temperature:	-40 °C to +85 °C
Operating force:	< 0.4 N
Mechanical life:	minimum 100 000 operations
Material:	Contacts: stainless steel, silver-plated Terminals: phosphor bronze, silver-plated Case and actuator: HTN/LCP, black

Models: Switching functions

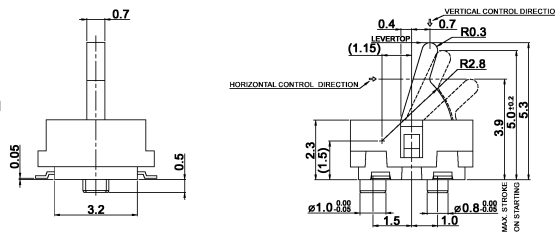
DTS 309 C-T

off – mom

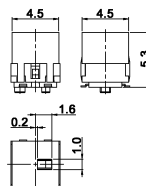


DTS 309 C T-K off – mom
as DTS 309 C-T, but with pick & place cap

DTS 312 CP-T off – mom
Delivery with pick & place cap



DTS 312 C-T off – mom
as DTS 312 CP-T, but without posts



Dimensions with pick & place cap (309 and 312)

